



SYMBOL OF QUALITY

Pioneers In Solderless Terminals,  
Crimping Tools & Cable Glands

## NATIONAL PRICE LIST

(2<sup>nd</sup> May 2019)



HOUSE OF DESIGNERS & MAKERS OF TERMINALS, TOOLS & CABLE

## COPPER SERIES



**COPPER TUBE TERMINAL MEDIUM DUTY**

mm <sup>2</sup> -E	CAT. NO.	PRICE EACH (Rs./Paise)	mm <sup>2</sup> -E	CAT. NO.	PRICE EACH (Rs./Paise)
2.5-5	CUS-05	4.32	120-12	CUS-22	85.00
4-6	CUS-06	6.03	120-16	CUS-23	85.00
6-6	CUS-07	6.57	150-10	CUS-24	121.00
10-6	CUS-08	8.28	150-12	CUS-25	121.00
16-6	CUS-09	10.91	150-16	CUS-26	121.00
25-6	CUS-10	18.00	185-12	CUS-27	178.00
35-6	CUS-11	20.00	185-16	CUS-28	178.00
35-8	CUS-12	20.00	225-16	CUS-231	222.00
50-6	CUS-13	26.00	240-16	CUS-29	250.00
50-8	CUS-14	26.00	240-20	CUS-30	250.00
50-10	CUS-15	26.00	300-16	CUS-31	342.00
70-8	CUS-16	46.00	300-20	CUS-32	342.00
70-10	CUS-17	46.00	400-20	CUS-33	495.00
70-12	CUS-18	46.00	500-20	CUS-34	650.00
95-10	CUS-19	64.00	630-20	CUS-35	913.00
95-12	CUS-20	64.00	800	CUS-62	1565.00
120-10	CUS-21	85.00	1000	CUS-76	2959.00



**COPPER TUBE TERMINAL HEAVY DUTY BS-4579**

mm <sup>2</sup> -E	CAT. NO.	PRICE EACH (Rs./Paise)	mm <sup>2</sup> -E	CAT. NO.	PRICE EACH (Rs./Paise)
1.5-5	CUS-538	5.34	50-10	CUS-556	42.00
1.5-6	CUS-539	5.56	70-10	CUS-358	68.00
2.5-4	CUS-388	5.56	70-8	CUS-557	68.00
2.5-5	CUS-540	5.77	70-13	CUS-559	68.00
2.5-6	CUS-541	5.77	95-10	CUS-359	97.00
4-5	CUS-389	6.71	95-13	CUS-561	97.00
4-6	CUS-543	6.71	120-17	CUS-546	133.00
6-5	CUS-390	7.86	120-18	CUS-241	133.00
6-6	CUS-544	8.63	150-13	CUS-242	173.00
6-8	CUS-545	8.63	150-17	CUS-564	160.00
10-6	CUS-353	9.20	185-17	CUS-243	227.00
10-8	CUS-547	9.80	240-17	CUS-244	335.00
16-8	CUS-549	12.53	240-21	CUS-567	335.00
16-6	CUS-354	11.31	300-17	CUS-245	490.00
20-8	CUS-550	13.28	300-21	CUS-569	490.00
25-6	CUS-355	19.00	400-17	CUS-246	770.00
25-8	CUS-551	19.00	400-21	CUS-571	770.00
25-10	CUS-552	19.00	500-21	CUS-247	1051.00
35-8	CUS-356	25.00	550-21	CUS-573	1287.00
35-6	CUS-542	25.00	630-21	CUS-248	1577.00
35-10	CUS-554	26.00	800	CUS-599	2438.00
50-8	CUS-357	42.00	1000	CUS-590	3685.00



**COPPER TUBE HEAVY DUTY IN-LINE CONNECTORS**

mm <sup>2</sup>	CAT. NO.	PRICE EACH (Rs./Paise)	mm <sup>2</sup>	CAT. NO.	PRICE EACH (Rs./Paise)
1.5	EH-453	2.25	150	CB-30	176.00
1.5	CB-41	3.62	150	CB-54	153.00
2.5	EH-454	2.78	185	CB-55	210.00
4	CB-3	3.96	185	CB-31	241.00
4.6	EH-455	4.66	240	CB-32	369.00
6	CB-4	5.30	240	CB-56	322.00
10	EH-460	7.32	300	CB-33	526.00
16	CB-6	8.31	300	CB-57	458.00
20	CB-47	10.14	400	CB-34	723.00
25	CB-24	20.00	400	CB-58	674.00
35	CB-25	27.00	500	CB-35	1040.00
50	CB-26	41.00	500	CB-59	985.00
70	CB-27	70.00	550	CB-60	1069.00
70	CB-51	69.00	630	CB-36	1432.00
95	CB-28	104.00	630	CB-61	1351.00
95	CB-52	91.00	800	CB-42	2456.00
120	CB-29	123.00	1000	CB-43	3655.00
120	CB-53	107.00			



**COPPER TUBE TERMINAL HEAVY DUTY LONG BARREL**

mm <sup>2</sup> -E	CAT. NO.	PRICE EACH (Rs./Paise)	mm <sup>2</sup> -E	CAT. NO.	PRICE EACH (Rs./Paise)
25-8	CUS-282	22.00	185-12	CUS-289	351.00
35-8	CUS-283	34.00	240-16	CUS-290	493.00
50-8	CUS-284	57.00	300-16	CUS-291	630.00
70-10	CUS-285	87.00	400-20	CUS-292	972.00
95-12	CUS-286	137.00	500-21	CUS-293	1706.00
120-12	CUS-287	196.00	630-21	CUS-294	2346.00
150-12	CUS-288	242.00			



**COPPER REDUCER TERMINALS**

mm <sup>2</sup>	CAT. NO.	PRICE EACH (Rs./Paise)	mm <sup>2</sup>	CAT. NO.	PRICE EACH (Rs./Paise)
2.5	WPC-1	13.38	95	WPC-29	125.00
2.5	WPC-7	12.14	95	WPC-8	176.00
4	WPC-15	13.38	95	WPC-31	115.00
4	WPC-16	12.14	95	WPC-32	185.00
6	WPC-17	14.15	120	WPC-33	153.00
6	WPC-18	12.14	120	WPC-34	152.00
10	WPC-19	16.70	120	WPC-35	176.00
10	WPC-20	15.20	120	WPC-36	237.00
10	WPC-21	19.00	150	WPC-10	277.00
10	WPC-22	17.20	150	WPC-37	215.00
16	WPC-23	32.91	185	WPC-30	354.00
16	WPC-24	32.91	185	WPC-38	283.00
16	WPC-2	23.80	225	WPC-39	464.00
25	WPC-25	38.00	225	WPC-46	637.00
25	WPC-3	51.00	225	WPC-42	589.00
35	WPC-4	50.00	240	WPC-44	607.00
50	WPC-26	56.00	240	WPC-43	444.00
50	WPC-5	94.00	300	WPC-45	562.00
70	WPC-27	86.00	300	WPC-47	601.00
70	WPC-6	109.00	400	WPC-101	1271.00
70	WPC-28	131.00			



**COPPER TUBE LIGHT DUTY IN-LINE CONNECTORS**

mm <sup>2</sup>	CAT. NO.	PRICE EACH (Rs./Paise)	mm <sup>2</sup>	CAT. NO.	PRICE EACH (Rs./Paise)
2.5	CB-23	3.89	225	CB-20	250.00
25	CB-7	20.00	240	CB-15	261.00
35	CB-8	26.00	300	CB-16	394.00
50	CB-9	40.00	400	CB-17	600.00
70	CB-10	58.00	500	CB-18	778.00
95	CB-11	81.00	630	CB-19	1072.00
120	CB-12	113.00	800	CB-21	1678.00
150	CB-13	144.00	1000	CB-22	2500.00
185	CB-14	181.00			



**COPPER TERMINAL EXTENDED PALM (BLANK)**

mm <sup>2</sup>	CAT. NO.	PRICE EACH (Rs./Paise)	mm <sup>2</sup>	CAT. NO.	PRICE EACH (Rs./Paise)
50	CUS-466	73.00	240	CUS-472	598.00
70	CUS-467	121.00	300	CUS-473	866.00
95	CUS-468	174.00	400	CUS-474	1461.00
120	CUS-469	208.00	500	CUS-475	1800.00
150	CUS-470	273.00	630	CUS-476	2773.00
185	CUS-471	405.00			



# NATIONAL PRICE LIST

(2<sup>nd</sup> May 2019)



## ALLUMINIUM SERIES



ALUMINIUM TUBE TERMINALS

mm <sup>2</sup> -E	CAT. NO.	PRICE EACH (Rs./Paise)	mm <sup>2</sup> -E	CAT. NO.	PRICE EACH (Rs./Paise)
2.5-3	ALS-151	1.69	70-12	ALS-226	14.00
2.5-3.5	ALS-309	1.69	95-10	ALS-227	15.00
4-4	ALS-155	1.77	95-12	ALS-228	15.00
4-5	ALS-317	1.77	95-16	ALS-229	15.00
6-5	ALS-158	2.12	120-10	ALS-257	21.00
6-6	ALS-313	2.12	120-12	ALS-230	21.00
10-4	ALS-159	2.50	120-16	ALS-231	21.00
10-6	ALS-214	2.50	150-10	ALS-258	27.00
10-8	ALS-215	2.50	150-12	ALS-232	27.00
16-6	ALS-252	3.61	150-16	ALS-233	27.00
16-8	ALS-216	3.61	185-10	ALS-311	34.00
16-10	ALS-217	3.61	185-12	ALS-234	34.00
25-6	ALS-253	5.00	185-16	ALS-235	34.00
25-8	ALS-218	5.00	225-12	ALS-320	48.00
25-10	ALS-219	5.00	240-12	ALS-236	58.00
25-12	ALS-220	5.00	240-16	ALS-237	58.00
35-6	ALS-254	6.00	300-16	ALS-300	82.00
35-8	ALS-221	6.00	300-20	ALS-259	82.00
35-10	ALS-222	6.00	400-20	ALS-260	118.00
50-8	ALS-255	9.00	500-20	ALS-296	171.00
50-10	ALS-312	9.00	630-20	ALS-261	229.00
50-12	ALS-224	9.00	800	ALS-318	317.00
70-8	ALS-256	14.00	1000	ALS-319	512.00
70-10	ALS-225	14.00			



ALUMINIUM IN LINE CONNECTORS

mm <sup>2</sup>	CAT. NO.	PRICE EACH (Rs./Paise)	mm <sup>2</sup>	CAT. NO.	PRICE EACH (Rs./Paise)
2.5	ALS-145	1.40	120	ALS-9	17.00
2.5	ALS-6	1.40	150	ALS-10	23.00
4	ALS-5	1.45	185	ALS-11	30.00
6	ALS-13	1.45	225	ALS-147	41.00
10	ALS-14	1.77	240	ALS-16	47.00
10	ALS-146	1.70	300	ALS-17	70.00
16	ALS-4	2.40	400	ALS-18	105.00
25	ALS-3	4.00	500	ALS-19	152.00
35	ALS-2	4.00	630	ALS-20	201.00
50	ALS-12	7.00	800	ALS-148	279.00
70	ALS-1	11.00	1000	ALS-149	448.00
95	ALS-15	13.00			



ALUMINIUM REDUCER TERMINALS

mm <sup>2</sup>	CAT. NO.	PRICE EACH (Rs./Paise)	mm <sup>2</sup>	CAT. NO.	PRICE EACH (Rs./Paise)
2.5	AWP-1	5.98	70	AWP-28	55.00
2.5	AWP-7	5.58	95	AWP-29	52.00
4	AWP-15	5.98	95	AWP-8	73.00
4	AWP-16	5.58	95	AWP-31	48.00
6	AWP-17	6.32	95	AWP-32	77.00
6	AWP-18	5.58	120	AWP-33	64.00
10	AWP-19	6.81	120	AWP-34	63.00
10	AWP-20	6.81	120	AWP-35	73.00
10	AWP-21	6.81	120	AWP-36	99.00
10	AWP-22	6.81	150	AWP-10	115.00
16	AWP-23	14.20	150	AWP-37	90.00
16	AWP-24	14.20	185	AWP-30	148.00
16	AWP-2	10.24	185	AWP-38	118.00
25	AWP-25	16.00	225	AWP-39	194.00
25	AWP-3	20.00	225	AWP-46	278.00
35	AWP-4	21.00	225	AWP-42	246.00
50	AWP-26	24.00	240	AWP-44	253.00
50	AWP-5	40.00	240	AWP-43	185.00
70	AWP-27	36.00	300	AWP-45	234.00
70	AWP-6	46.00	300	AWP-47	251.00



ALUMINIUM TUBE TERMINALS LONG BARREL

mm <sup>2</sup> -E	CAT. NO.	PRICE EACH (Rs./Paise)	mm <sup>2</sup> -E	CAT. NO.	PRICE EACH (Rs./Paise)
2.5-3	ALS-551	2.47	95-10	ALS-527	18.00
2.5-3.5	ALS-509	2.47	95-12	ALS-528	18.00
4-4	ALS-555	2.50	95-16	ALS-529	18.00
4-5	ALS-517	2.50	120-10	ALS-557	25.00
6-5	ALS-558	2.75	120-12	ALS-530	25.00
6-6	ALS-513	2.75	120-16	ALS-531	25.00
10-4	ALS-514	3.37	150-10	ALS-658	33.00
10-6	ALS-515	3.37	150-12	ALS-532	33.00
16-6	ALS-552	4.35	150-16	ALS-533	33.00
16-8	ALS-516	4.35	185-10	ALS-511	42.00
16-10	ALS-617	4.35	185-12	ALS-534	42.00
25-8	ALS-518	5.00	185-16	ALS-535	42.00
25-10	ALS-519	5.00	225-12	ALS-620	58.00
25-12	ALS-520	5.00	240-12	ALS-536	70.00
35-8	ALS-521	7.00	240-16	ALS-537	70.00
35-10	ALS-522	7.00	300-16	ALS-500	103.00
50-8	ALS-655	11.00	300-20	ALS-559	103.00
50-10	ALS-512	11.00	400-20	ALS-560	143.00
50-12	ALS-524	11.00	500-20	ALS-596	206.00
70-8	ALS-556	17.00	630-20	ALS-561	271.00
70-10	ALS-525	17.00	800	ALS-618	385.00
70-12	ALS-526	17.00	1000	ALS-619	628.00



ALUMINIUM TERMINALS FOR AL.XLPE CONDUCTORS

mm <sup>2</sup>	CAT. NO.	PRICE EACH (Rs./Paise)	mm <sup>2</sup>	CAT. NO.	PRICE EACH (Rs./Paise)
25-8	ALS-XL17	7.00	225-12	ALS-XL25	97.00
35-8	ALS-XL18	10.00	240-12	ALS-XL26	109.00
50-10	ALS-XL19	16.00	300-20	ALS-XL27	142.00
70-10	ALS-XL20	21.00	400-20	ALS-XL28	226.00
95-12	ALS-XL21	32.00	500-20	ALS-XL29	315.00
120-12	ALS-XL22	41.00	630-20	ALS-XL30	451.00
150-12	ALS-XL23	59.00	800-20	ALS-XL31	609.00
185-12	ALS-XL24	78.00	1000-20	ALS-XL32	1300.00



ALUMINIUM IN LINE CONNECTORS FOR AL.XLPE CONDUCTORS

mm <sup>2</sup>	CAT. NO.	PRICE EACH (Rs./Paise)	mm <sup>2</sup>	CAT. NO.	PRICE EACH (Rs./Paise)
25	ALS-XL1	6.00	225	ALS-XL9	88.00
35	ALS-XL2	9.00	240	ALS-XL10	104.00
50	ALS-XL3	15.00	300	ALS-XL11	134.00
70	ALS-XL4	21.00	400	ALS-XL12	205.00
95	ALS-XL5	29.00	500	ALS-XL13	268.00
120	ALS-XL6	37.00	630	ALS-XL14	371.00
150	ALS-XL7	49.00	800	ALS-XL15	508.00
185	ALS-XL8	73.00	1000	ALS-XL16	699.00



ALUMINIUM TUBE TERMINALS TWO HOLES

mm <sup>2</sup> -E	CAT. NO.	PRICE EACH (Rs./Paise)	mm <sup>2</sup> -E	CAT. NO.	PRICE EACH (Rs./Paise)
150	ALS-701	66.00	630	ALS-706	481.00
240	ALS-702	118.00	300	ALS-704	182.00
300	ALS-703	182.00	300	ALS-705	199.00

## CORROSION INHIBITING COMPOUND



GTZ - 8785 Rs. 44.64/-

PRICE ARE SUBJECT TO CHANGE WITHOUT NOTICE



## COPPER RING, PIN, FORK, TYPE SERIES



**PIN TERMINAL NON-INSULATED**

mm <sup>2</sup>	CAT. NO.	PRICE EACH (Rs./Paise)	mm <sup>2</sup>	CAT. NO.	PRICE EACH (Rs./Paise)
0.75	CP-59	1.75	4	CP-3	3.10
1	CP-44	1.75	6	CP-5	3.45
1.5	CP-9	1.75	10	CP-7	5.60
1.5	CP-35	2.05	16	CP-8	8.50
2.5	CP-1	1.75	50	CP-88	38.00
2.5	CP-2	1.75	70	CP-89	55.00
25	CP-86	19.00	95	CP-90	65.00
35	CP-87	23.00			



**RING TERMINALS**

mm <sup>2</sup> -E	CAT. NO.	PRICE EACH (Rs./Paise)	mm <sup>2</sup> -E	CAT. NO.	PRICE EACH (Rs./Paise)
0.75-4	RS-7317	1.60	10-5	RS-7026	4.75
1-3.5	RS-7318	1.60	10-6	RS-7120	5.00
1.5-3	RS-7001	1.75	10-8	RS-7121	6.60
1.5-3.5	RS-7002	1.75	10-10	RS-7027	9.10
1.5-3.5	RS-7048	1.75	10-10	RS-7123	9.70
1.5-4	RS-7003	1.75	10-12	RS-7028	9.20
1.5-4	RS-7049	1.75	16-5	RS-7124	8.15
1.5-4	RS-7004	1.90	16-6	RS-7029	9.40
1.5-4	RS-7154	2.00	16-6	RS-7031	11.30
1.5-5	RS-7005	1.90	16-8	RS-7030	9.50
1.5-5	RS-7006	2.25	16-10	RS-7032	12.95
1.5-6	RS-7007	2.25	16-10	RS-7128	14.25
1.5-6	RS-7106	2.35	16-12	RS-7033	12.65
2.5-3	RS-7107	2.20	25-6	RS-7156	16.00
2.5-3.5	RS-7008	2.25	25-8	RS-7034	18.00
2.5-3.5	RS-7108	2.25	25-8	RS-7036	22.00
2.5-4	RS-7009	1.95	25-10	RS-7035	18.00
2.5-5	RS-7010	1.95	25-10	RS-7132	27.00
2.5-5	RS-7109	2.00	25-12	RS-7037	26.00
2.5-5	RS-7110	2.80	35-6	RS-7133	21.00
2.5-6	RS-7011	2.00	35-8	RS-7038	22.00
2.5-6	RS-7012	2.75	35-10	RS-7135	32.00
2.5-8	RS-7013	3.20	35-12	RS-7040	30.00
2.5-8	RS-7014	3.95	50-8	RS-7136	32.00
2.5-10	RS-7015	4.45	50-10	RS-7137	35.00
2.5-10	RS-7151	4.50	50-12	RS-7042	41.00
4.6-4	RS-7155	3.65	50-16	RS-7139	48.00
4.6-5	RS-7050	3.65	70-10	RS-7140	53.00
4.6-5	RS-7016	4.40	70-12	RS-7141	54.00
4.6-6	RS-7017	3.70	70-16	RS-7142	61.00
4.6-6	RS-7019	4.90	95-10	RS-7144	73.00
4.6-6	RS-7115	5.40	95-12	RS-7044	72.00
4.6-8	RS-7018	4.40	95-16	RS-7145	84.00
4.6-8	RS-7020	5.65	120-12	RS-7146	94.00
4.6-8	RS-7116	6.80	120-16	RS-7147	104.00
4.6-10	RS-7022	6.80	120-20	RS-7148	121.00
4.6-10	RS-7023	6.30	150-12	RS-7149	201.00
4.6-12	RS-7024	6.30	150-16	RS-7045	191.00
10-5	RS-7025	5.15	150-20	RS-7046	197.00



**RING TERMINALS INSULATED**

mm <sup>2</sup> -E	CAT. NO.	PRICE EACH (Rs./Paise)	mm <sup>2</sup> -E	CAT. NO.	PRICE EACH (Rs./Paise)
0.75-4	RSI-7501	1.95	2.5-5	RSI-7073	3.00
1-4	RSI-7502	1.95	2.5-5	RSI-7075	4.00
1.5-3	RSI-7054	2.65	2.5-6	RSI-7074	3.00
1.5-3.5	RSI-7055	2.65	2.5-6	RSI-7076	3.45
1.5-3.5	RSI-7058	2.90	2.5-8	RSI-7077	3.65
1.5-4	RSI-7056	2.65	2.5-8	RSI-7079	4.45
1.5-4	RSI-7059	2.90	2.5-10	RSI-7081	5.10
1.5-4	RSI-7061	2.20	4.6-4	RSI-7083	4.45
1.5-4	RSI-7063	2.65	4.6-5	RSI-7084	4.45
1.5-5	RSI-7062	2.20	4.6-5	RSI-7086	5.10
1.5-5	RSI-7065	3.40	4.6-6	RSI-7089	4.45
1.5-5	RSI-7066	3.15	4.6-6	RSI-7092	5.65
1.5-6	RSI-7067	3.40	4.6-6	RSI-7093	6.20
2.5-3	RSI-7068	2.90	4.6-8	RSI-7090	5.10
2.5-3.5	RSI-7069	2.90	4.6-8	RSI-7094	6.20
2.5-3.5	RSI-7070	3.15	4.6-8	RSI-7096	7.35
2.5-4	RSI-7071	2.75	4.6-10	RSI-7099	6.80
2.5-5	RSI-7072	2.75	4.6-12	RSI-7100	6.80



**PIN TERMINAL INSULATED**

mm <sup>2</sup>	CAT. NO.	PRICE EACH (Rs./Paise)	mm <sup>2</sup>	CAT. NO.	PRICE EACH (Rs./Paise)
0.75	CPI-60	2.05	4	CPI-20	4.25
1	CPI-45	2.05	4	CPI-21	5.55
1.5	CPI-17	2.05	6	CPI-22	6.10
1.5	CPI-40	2.30	6	CPI-23	6.50
2.5	CPI-18	2.20	10	CPI-24	7.10
2.5	CPI-19	2.20	16	CPI-25	10.70



**PIN TERMINAL DOUBLE GRIP (PRE-INSULATED)**

mm <sup>2</sup>	CAT. NO.	PRICE EACH (Rs./Paise)	mm <sup>2</sup>	CAT. NO.	PRICE EACH (Rs./Paise)
1.5	CPD-26	2.80	2.5	CPD-28	3.00
2.5	CPD-27	3.00	4	CPD-29	4.95



**SNAP ON TERMINALS**

mm <sup>2</sup>	Cat No.	PRICE EACH (Rs./Paise)
1.5	SNP-8351	2.25
1.5	SND-8352	3.20
2.5	SNP-8347	2.40
2.5	SND-8348	3.45
4	SND-8476	6.25
1.5	SND-8359	4.40
1.5	SND-8362	4.35
1.5	SNP-8336	2.25
1.5	SNP-8356	2.25
1.5	SNP-8358	2.55



**FORK TYPE TERMINALS**

NON-INSULATED FORK TYPE					
1-3	RS-7249 SPL	1.50	2.5-5	RS-7280	4.75
1.5-3.5	RS-7249	1.50	4.6-3	RS-7252	3.00
2.5-3.5	RS-7251	1.65	4.6-3.5	RS-7253	3.00
INSULATED FORK TYPE					
1-3	RSI-7926 SPL	1.95	2.5-5	RSI-7929	5.50
1.5-3.5	RSI-7926	1.95	4.6-3	RSI-7930	3.80
2.5-3.5	RSI-7928	2.25	4.6-3.5	RSI-7931	3.80
PRE-INSULATED FORK TYPE					
1.5-3.5	PSD-7935	2.55	4.6-3	PSD-7939	4.90
2.5-3.5	PSD-7937	3.00	4.6-3.5	PSD-7940	4.90
2.5-5	PSD-7938	6.80			



**RING TERMINALS DOUBLE GRIP (PRE-INSULATED)**

mm <sup>2</sup> -E	CAT. NO.	PRICE EACH (Rs./Paise)	mm <sup>2</sup> -E	CAT. NO.	PRICE EACH (Rs./Paise)
1.5-3	PSD-7437	3.00	4.6-5	PSD-7469	6.15
1.5-3.5	PSD-7438	3.00	4.6-6	PSD-7472	5.60
1.5-4	PSD-7439	3.00	4.6-8	PSD-7473	5.90
1.5-3.5	PSD-7441	3.00	4.6-6	PSD-7475	6.70
1.5-4	PSD-7442	3.00	4.6-6	PSD-7476	7.20
1.5-4	PSD-7444	2.90	4.6-8	PSD-7477	7.20
1.5-5	PSD-7445	2.90	4.6-8	PSD-7479	8.25
1.5-4	PSD-7446	3.30	4.6-8	PSD-7482	8.95
1.5-5	PSD-7448	3.50	4.6-12	PSD-7483	7.75
1.5-6	PSD-7449	3.50	4.6-8	PSD-8037	8.60
1.5-6	PSD-7450	3.75	4.6-9.9	PSD-8038	8.60
2.5-3	PSD-7451	3.50	2.5-4	PSD-8039	4.00
2.5-3.5	PSD-7452	3.50	4.6-8	PSD-8040	9.15
2.5-3.5	PSD-7453	3.55	4.6-5	PSD-8041	7.85
2.5-4	PSD-7454	3.10	4.6-6	PSD-8042	8.70
2.5-5	PSD-7455	3.10	4.6-13	PSD-8043	11.15
2.5-5	PSD-7456	3.10	2.5-8	PSD-8044	5.15
2.5-6	PSD-7457	3.10	4.6-4	PSD-8045	8.15
2.5-5	PSD-7458	4.35	2.5-5	PSD-8046	4.25
2.5-6	PSD-7459	3.80	2.5-6	PSD-8047	5.15
2.5-8	PSD-7460	4.35	2.5-9	PSD-8048	5.45
2.5-8	PSD-7462	5.05	2.5-4	PSD-8049	4.45
2.5-10	PSD-7464	5.70	4.6-5	PSD-8050	8.15
4.6-4	PSD-7466	5.40	4.6-5	PSD-8051	10.25
4.6-5	PSD-7467	5.38	4.6-6	PSD-8052	9.10



# NATIONAL PRICE LIST

(2<sup>nd</sup> May 2019)



**COPPER TUBULAR TERMINALS  
LONG BARREL**

mm <sup>2</sup> -E	CAT. NO.	PRICE EACH (Rs./Paise)	mm <sup>2</sup> -E	CAT. NO.	PRICE EACH (Rs./Paise)
2.5-5	CEB-05	6.35	120-12	CEB-22	105.00
4-6	CEB-06	8.70	120-16	CEB-23	105.00
6-6	CEB-07	9.65	150-10	CEB-24	148.00
10-6	CEB-08	11.90	150-12	CEB-25	148.00
16-6	CEB-09	16.00	150-16	CEB-26	148.00
25-6	CEB-10	27.00	185-12	CEB-27	223.00
35-6	CEB-11	24.00	185-16	CEB-28	223.00
35-8	CEB-12	28.00	225-16	CEB-231	290.00
50-6	CEB-13	36.00	240-16	CEB-29	308.00
50-8	CEB-14	36.00	240-20	CEB-30	308.00
50-10	CEB-15	36.00	300-16	CEB-31	425.00
70-8	CEB-16	59.00	300-20	CEB-32	425.00
70-10	CEB-17	59.00	400-20	CEB-33	616.00
70-12	CEB-18	59.00	500-20	CEB-34	815.00
95-10	CEB-19	77.00	630-20	CEB-35	1160.00
95-12	CEB-20	77.00	800	CEB-62	1857.00
120-10	CEB-21	105.00	1000	CEB-76	3372.00



**END SEALING FERRULES**

mm <sup>2</sup> -L	CAT. NO.	PRICE EACH (Rs./Paise)	mm <sup>2</sup> -L	CAT. NO.	PRICE EACH (Rs./Paise)
0.5-6	EH-508	0.40	6-10	EH-518	0.95
0.75-6	EH-509	0.40	6-12	EH-519	1.15
1-6	EH-510	0.40	6-15	EH-520	1.45
1-10	EH-511	0.50	10-12	EH-521	1.90
1.5-7	EH-512	0.50	10-15	EH-522	2.00
1.5-10	EH-513	0.60	10-18	EH-523	2.30
2.5-7	EH-514	0.60	16-12	EH-524	2.00
2.5-12	EH-515	0.65	16-15	EH-525	2.30
4-9	EH-516	0.70	16-18	EH-526	2.60
4-12	EH-517	0.80			



**TWIN TYPE LUGS**

mm <sup>2</sup> -L	LENGTH mm	COLOUR Natural	RATE Rs/pc
0.5-8	8	WHITE	1.92
0.5-10	10	WHITE	1.99
0.75-8	8	GREY	1.92
0.75-10	10	GREY	1.99
1-8	8	RED	2.07
1-10	10	RED	2.14
1.5-8	8	BLACK	2.07
1.5-10	10	BLACK	2.14
2.5-8	8	BLUE	2.33
2.5-10	10	BLUE	2.39
4-12	12	GREY	2.83
6-12	12	YELLOW	2.83
10-14	14	RED	5.5
16-14	14	BLUE	6.25



**END SEALING FERRULES ( INSULATED )**

mm <sup>2</sup> -L	CAT. NO.	PRICE EACH (Rs./Paise)
0.5-8	EHI-508	0.76
0.75-8	EHI-509	0.76
1-6	EHI-510	0.83
1-10	EHI-511	0.83
1.5-10	EHI-513	0.85
2.5-8	EHI-514	0.90
2.5-12	EHI-515	0.90
4-12	EHI-517	1.35
6-12	EHI-519	1.60
10-12	EHI-521	2.05
16-15	EHI-525	3.50



**COPPER DIN TYPE TERMINALS**

mm <sup>2</sup> -E	CAT. NO.	PRICE EACH (Rs./Paise)	mm <sup>2</sup> -E	CAT. NO.	PRICE EACH (Rs./Paise)
6-5	DIN-6-5	13.16	95-16	DIN-95-16	355.00
6-6	DIN-6-6	13.16	120-10	DIN-120-10	447.00
6-8	DIN-6-8	13.16	120-12	DIN-120-12	447.00
10-5	DIN-10-5	14.27	120-14	DIN-120-14	447.00
10-6	DIN-10-6	14.27	120-16	DIN-120-16	447.00
10-8	DIN-10-8	14.27	120-20	DIN-120-20	447.00
16-6	DIN-16-6	50.40	150-10	DIN-150-10	638.00
16-8	DIN-16-8	50.40	150-12	DIN-150-12	638.00
16-10	DIN-16-10	50.40	150-14	DIN-150-14	638.00
16-12	DIN-16-12	50.40	150-16	DIN-150-16	638.00
25-6	DIN-25-6	64.00	150-20	DIN-150-20	638.00
25-8	DIN-25-8	64.00	185-10	DIN-185-10	730.00
25-10	DIN-25-10	64.00	185-12	DIN-185-12	730.00
25-12	DIN-25-12	64.00	185-14	DIN-185-14	730.00
35-6	DIN-35-6	123.00	185-16	DIN-185-16	730.00
35-8	DIN-35-8	123.00	185-20	DIN-185-20	730.00
35-10	DIN-35-10	123.00	240-12	DIN-240-12	1048.00
35-12	DIN-35-12	123.00	240-14	DIN-240-14	1048.00
35-14	DIN-35-14	123.00	240-16	DIN-240-16	1048.00
50-8	DIN-50-8	184.00	240-20	DIN-240-20	1048.00
50-10	DIN-50-10	184.00	300-14	DIN-300-14	1266.00
50-12	DIN-50-12	184.00	300-16	DIN-300-16	1266.00
50-14	DIN-50-14	184.00	300-20	DIN-300-20	1266.00
50-16	DIN-50-16	184.00	400-14	DIN-400-14	2489.00
70-8	DIN-70-8	243.00	400-16	DIN-400-16	2489.00
70-10	DIN-70-10	243.00	400-20	DIN-400-20	2489.00
70-12	DIN-70-12	243.00	500-16	DIN-500-16	2950.00
70-14	DIN-70-14	243.00	500-20	DIN-500-20	2950.00
70-16	DIN-70-16	243.00	625-16	DIN-625-16	2922.00
95-8	DIN-95-8	355.00	625-20	DIN-625-20	2922.00
95-10	DIN-95-10	355.00	800-16	DIN-800-16	5272.00
95-12	DIN-95-12	355.00	800-20	DIN-800-20	5272.00
95-14	DIN-95-14	355.00	1000-21	DIN-1000-21	6645.00



**COPPER TUBE TERMINALS ICF SERIES**

mm <sup>2</sup> -E	CAT. NO.	PRICE EACH (Rs./Paise)	mm <sup>2</sup> -E	CAT. NO.	PRICE EACH (Rs./Paise)
17-5	CUS-106	24.25	90-8	CUS-161	184.00
17-6	CUS-145	24.25	90-10	CUS-162	184.00
17-8	CUS-146	24.25	90-13	CUS-163	184.00
17-10	CUS-109	25.55	110-6	CUS-115	224.00
23-5	CUS-107	40.70	110-8	CUS-164	224.00
23-6	CUS-147	40.70	110-10	CUS-165	224.00
23-8	CUS-148	40.70	110-13	CUS-166	224.00
23-10	CUS-108	43.25	146-8	CUS-138	330.00
29-5	CUS-110	61.00	146-10	CUS-167	330.00
29-6	CUS-149	56.00	146-13	CUS-168	330.00
29-8	CUS-150	56.00	146-17	CUS-169	330.00
29-10	CUS-151	58.00	183-10	CUS-128	430.00
29-13	CUS-111	56.00	183-13	CUS-170	451.00
45-5	CUS-116	79.00	183-17	CUS-171	451.00
45-6	CUS-152	79.00	225-10	CUS-139	520.00
45-8	CUS-153	79.00	225-13	CUS-172	520.00
45-10	CUS-154	79.00	225-17	CUS-173	520.00
45-10	CUS-113	79.00	225-21	CUS-174	520.00
57-6	CUS-112	131.00	299-13	CUS-140	735.00
57-8	CUS-155	131.00	299-17	CUS-175	745.00
57-10	CUS-156	131.00	299-21	CUS-176	735.00
57-13	CUS-157	131.00	366-13	CUS-141	1036.00
75-6	CUS-114	166.00	366-17	CUS-177	1036.00
75-8	CUS-158	166.00	366-21	CUS-178	1036.00
75-10	CUS-159	166.00	437-13	CUS-142	1421.00
75-13	CUS-160	166.00	437-17	CUS-179	1422.00
90-6	CUS-137	184.00	437-21	CUS-180	1422.00



**COPPER TUBE IN-LINE CONNECTORS**

mm <sup>2</sup>	CAT. NO.	PRICE EACH (Rs./Paise)	mm <sup>2</sup>	CAT. NO.	PRICE EACH (Rs./Paise)
1.5	EH-453	2.25	4-6	EH-455	4.66
2.5	EH-454	2.78			

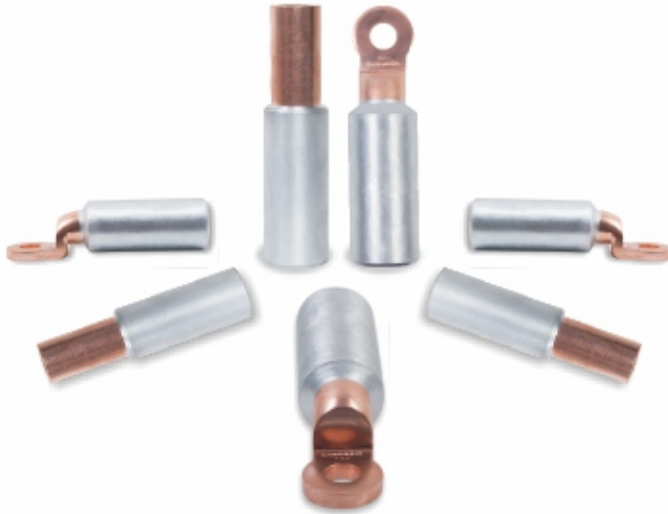


**COPPER INSULATED IN-LINE CONNECTORS**

mm <sup>2</sup>	CAT. NO.	PRICE EACH (Rs./Paise)	mm <sup>2</sup>	CAT. NO.	PRICE EACH (Rs./Paise)
1.5	EH-463	2.88	4-6	EH-465	5.04
2.5	EH-464	3.47			

PRICE ARE SUBJECT TO CHANGE WITHOUT NOTICE

## BI-METALLIC SERIES



### BI-METALLIC CONNECTORS (Friction Welded)

mm <sup>2</sup>	CAT. NO.	PRICE EACH (Rs./Paise)
16-16	CACF-16-16	192.50
25-16	CACF-25-16	192.50
25-25	CACF-25-25	189.20
35-16	CACF-35-16	192.50
35-25	CACF-35-25	188.10
35-35	CACF-35-35	184.80
50-25	CACF-50-25	236.50
50-35	CACF-50-35	234.30
50-50	CACF-50-50	228.80
70-35	CACF-70-35	233.20
70-50	CACF-70-50	227.70
70-70	CACF-70-70	217.80
95-50	CACF-95-50	292.60
95-75	CACF-95-75	282.70
95-95	CACF-95-95	280.50
120-70	CACF-120-70	368.50
120-95	CACF-120-95	361.90
120-120	CACF-120-120	354.20
150-95	CACF-150-95	359.70
150-120	CACF-150-120	352.00
150-150	CACF-150-150	338.80
185-120	CACF-185-120	502.70
185-150	CACF-185-150	490.60
185-185	CACF-185-185	611.60
240-150	CACF-240-150	544.50
240-185	CACF-240-185	607.20
240-240	CACF-240-240	585.20

### BI-METALLIC TERMINALS (Friction Welded)

mm <sup>2</sup>	CAT. NO.	PRICE EACH (Rs./Paise)
25	CAF-25-10	154.00
35	CAF-35-10	168.30
50	CAF-50-13	193.60
70	CAF-70-13	225.50
95	CAF-95-13	231.00
120	CAF-120-13	264.00
150	CAF-150-13	291.50
185	CAF-185-13	455.40
240	CAF-240-13	499.40
300	CAF-300-17	587.40
400	CAF-400-17	644.60
500	CAF-500	1247.40
630	CAF-630	1452.00

### ALUMINIUM ALLOY TUBULAR BIMETALLIC TERMINALS

mm <sup>2</sup> - E	CAT. NO.	PRICE EACH (Rs./Paise)	mm <sup>2</sup> - E	CAT. NO.	PRICE EACH (Rs./Paise)
10-6	BL-1	3.66	120-12	BL-16	29.00
10-8	BL-2	3.66	150-12	BL-17	40.00
16-6	BL-3	4.59	150-16	BL-18	40.00
16-8	BL-4	4.59	185-12	BL-19	50.00
25-8	BL-5	6.00	185-16	BL-20	50.00
25-10	BL-6	6.00	225-12	BL-21	70.00
35-8	BL-7	7.00	240-12	BL-22	85.00
35-10	BL-8	7.00	240-16	BL-23	85.00
50-8	BL-9	12.00	300-16	BL-24	135.00
50-10	BL-10	12.00	300-20	BL-25	135.00
70-10	BL-11	19.00	400-20	BL-26	170.00
70-12	BL-12	19.00	500-20	BL-27	244.00
95-10	BL-13	20.00	630-20	BL-28	319.00
95-12	BL-14	20.00	800-20	BL-29	480.00
120-10	BL-15	29.00	1000-20	BL-30	786.00



# NATIONAL PRICE LIST

(2<sup>nd</sup> May 2019)



## DOUBLE COMPRESSION ARMoured WEATHER AND FLAME PROOF BRASS CABLE GLANDS



SUITABLE OVER ALL DIAMETER	NIPPLE ET THREAD	WEATHER PROOF			FLAME PROOF		
		DOWELL'S CAT. NO.	PRICE EACH (Rs./Paise)	BOX PKG.	DOWELL'S CAT. NO.	PRICE EACH (Rs./Paise)	BOX PKG.
6.0 - 12.0	3/4"	DBW - 01SS	146.00	56	DBF - 01SS	189.00	50
12.0 - 16.5	3/4"	DBW - 01S	162.00	50	DBF - 01S	202.00	40
16.5 - 18.5	3/4"	DBW - 01	182.00	36	DBF - 01	224.00	24
16.5 - 18.5	1"	DBW - 01A	196.00	30	DBF - 01A	239.00	24
18.5 - 20.0	1"	DBW - 02	240.00	30	DBF - 02	294.00	20
18.5 - 20.0	3/4"	DBW - 02A	249.00	30	DBF - 02A	310.00	20
20.0 - 23.0	1"	DBW - 03	255.00	30	DBF - 03	333.00	20
23.0 - 26.0	1"	DBW - 04	333.00	12	DBF - 04	423.00	12
23.0 - 26.0	1.1/4"	DBW - 04A	374.00	12	DBF - 04A	473.00	12
26.0 - 30.0	1.1/4"	DBW - 05	403.00	12	DBF - 05	491.00	12
26.0 - 30.0	1.1/2"	DBW - 05A	411.00	12	DBF - 05A	524.00	12
30.0 - 33.0	1.1/2"	DBW - 06	579.00	10	DBF - 06	704.00	8
30.0 - 33.0	1.1/4"	DBW - 06A	601.00	8	DBF - 06A	736.00	8
33.0 - 37.0	1.1/2"	DBW - 07	668.00	6	DBF - 07	791.00	6
37.0 - 41.0	2"	DBW - 08	838.00	6	DBF - 08	980.00	6
41.0 - 46.0	2"	DBW - 09	992.00	6	DBF - 09	1134.00	5
46.0 - 52.0	2"	DBW - 010	1089.00	4	DBF - 010	1276.00	2
46.0 - 52.0	2.1/2"	DBW - 010A	1222.00	3	DBF - 010A	1408.00	2
52.0 - 54.0	2.1/2"	DBW - 011A	1617.00	2	DBF - 011A	1776.00	2
54.0 - 61.0	2.1/2"	DBW - 011	1622.00	2	DBF - 011	1782.00	2
61.0 - 66.0	3"	DBW - 012	1899.00	2	DBF - 012	2151.00	2
66.0 - 72.0	3"	DBW - 013A	2409.00	1	DBF - 013A	2596.00	1
72.0 - 78.0	3.1/4"	DBW - 013	2447.00	1	DBF - 013	2662.00	1
78.0 - 84.0	3.1/2"	DBW - 014	2937.00	1	DBF - 014	3250.00	1
84.0 - 94.0	4"	DBW - 015	4279.00	1	DBF - 015	4532.00	1
94.0 - 104.0	4.1/2"	DBW - 016	4917.00	1	DBF - 016	5115.00	1

### NOTE :

- Price are subjected to change without prior notice.
- Applicable G.S.T will be charge extra - This price list supersedes all our earlier price list.
- HSN Code - 85389000
- Cable Glands are Duly Nickel Plated as per standard.
- For Chrome / Tin / or any other plating, shall be charge extra as applicable.
- Subjected to Mumbai Jurisdiction.

## DOUBLE COMPRESSION UN-ARMOURED BRASS CABLE GLANDS



Sr. No.	DOWELL'S CAT. NO.	PRICE EACH (Rs./Paise)	BOX PKG.
1	DBW - 01SS (UN)	154.00	56
2	DBW - 01S (UN)	169.00	50
3	DBW - 01A (UN)	205.00	30
4	DBW - 02 (UN)	262.00	30
5	DBW - 03 SP (UN)	280.00	30
6	DBW - 04A (UN)	397.00	12
7	DBW - 05A (UN)	435.00	12
8	DBW - 06 SP (UN)	608.00	8
9	DBW - 07 SP (UN)	701.00	6
10	DBW - 08 (UN)	880.00	6
11	DBW - 09 (UN)	1042.00	6
12	DBW - 010A (UN)	1284.00	3
13	DBW - 011SP (UN)	1698.00	2
14	DBW - 012 (UN)	1994.00	2
15	DBW - 013 (UN)	2530.00	1
16	DBW - 014 (UN)	3084.00	1
17	DBW - 015 (UN)	4493.00	1

### NOTE :

- Price are subjected to change without prior notice.
- Applicable G.S.T will be charge extra - This price list supersedes all our earlier price list.
- HSN Code - 85389000
- Cable Glands are Duly Nickel Plated as per standard.
- For Chrome / Tin / or any other plating, shall be charge extra as applicable.
- Subjected to Mumbai Jurisdiction.



# NATIONAL PRICE LIST

(2<sup>nd</sup> May 2019)



## SINGLE COMPRESSION AND SIBG BRASS CABLE GLANDS



SINGLE COMPRESSION GLANDS				SIBG SERIES		
DOWELL'S CAT. NO.		PRICE EACH (Rs./Paise)	BOX PKG.	DOWELL'S CAT. NO.	PRICE EACH (Rs./Paise)	BOX PKG.
INCH	MM					
3/8"	10	43.00	128	1616	73.00	96
1/2"	12	43.00	128	1619	76.00	96
5/8"	16	43.00	135	2119	106.00	54
3/4"	19	47.00	105	2125	115.00	54
7/8"	22	57.00	84	2925	142.00	24
1"	25	71.00	60	2932	154.00	24
1.1/8"	28	106.00	30	2938	176.00	12
1.1/4"	32	127.00	24	3638	256.00	12
1.3/8"	35	157.00	24	4251	392.00	8
1.1/2"	38	189.00	16	5451	467.00	6
1.3/4"	45	217.00	12	5463	513.00	5
2"	50	263.00	10	6063	710.00	4
2.1/4"	57	388.00	6	6675	841.00	4
2.1/2"	63	464.00	5	7882	1233.00	3
2.3/4"	70	506.00	5			
3"	75	596.00	4			
3.1/4"	82	677.00	3			
3.1/2"	88	1121.00	3			
4"	100	1331.00	3			
4.1/2"	112	2057.00	2			

### NOTE :

- Price are subjected to change without prior notice.
- Applicable G.S.T will be charge extra - This price list supersedes all our earlier price list.
- HSN Code - 85389000
- Cable Glands are Duly Nickel Plated as per standard.
- For Chrome / Tin / or any other plating, shall be charge extra as applicable.
- Subjected to Mumbai Jurisdiction.

## EARTH TAGS & SHROUDS



FOR GLAND SIZE	EARTH TAG	LSF / LSZH SHROUD	
	PRICE EACH (Rs./Paise)	SHROUD SIZE / CODE	PRICE EACH (Rs./Paise)
DBW - 01SS/DBF - 01SS	33.00	2023	22.00
DBW - 01S/DBF - 01S	33.00	2026	28.00
DBW - 01/DBF - 01	33.00	2030	29.00
DBW - 01A/DBF - 01A	34.00	2030	29.00
DBW - 02/DBF - 02	34.00	2533	35.00
DBW - 02A/DBF - 02A	40.00	2533	35.00
DBW - 03/DBF - 03	48.00	2535	35.00
DBW - 04/DBF - 04	48.00	4000	70.00
DBW - 04A/DBF - 04A	60.00	4000	70.00
DBW - 05/DBF - 05	60.00	3246	61.00
DBW - 05A/DBF - 05A	66.00	3246	61.00
DBW - 06/DBF - 06	66.00	3251	59.00
DBW - 06A/DBF - 06A	60.00	3251	59.00
DBW - 07/DBF - 07	66.00	4053	70.00
DBW - 08/DBF - 08	88.00	5063	105.00
DBW - 09/DBF - 09	88.00	5068	114.00
DBW - 010/DBF - 010	88.00	6371	178.00
DBW - 010A/DBF - 010A	113.00	6371	178.00
DBW - 011A/DBF - 011A	113.00	6388	198.00
DBW - 011/DBF - 011	113.00	6388	198.00
DBW - 012/DBF - 012	158.00	7595	204.00
DBW - 013A/DBF - 013A	160.00	7595	204.00
DBW - 013/DBF - 013	170.00	7595	204.00
DBW - 014/DBF - 014	189.00		
DBW - 015/DBF - 015	265.00		
DBW - 016/DBF - 016	315.00		

### NOTE :

- Price are subjected to change without prior notice.
- Applicable G.S.T will be charge extra - This price list supersedes all our earlier price list.
- Applicable HSN Code for Earth tag is 85389000
- Applicable HSN Code for Shroud is 85472000
- Earth tags are with screw
- Subjected to Mumbai Jurisdiction.



# NATIONAL PRICE LIST

(2<sup>nd</sup> May 2019)



## NYLON / BRASS PG GLANDS & FLANGE TYPE GLANDS



NYLON PG GLAND		
SUITABLE OVER ALL DIAMETER	DOWELL'S CATLOGUE NO.	PRICE EACH (Rs./Paise)
3.5 - 6	PG - 7	15.00
4 - 8	PG - 9	18.00
5 - 10	PG - 11	24.00
6 - 12	PG - 13.5	30.00
10 - 14	PG - 16	36.00
13 - 18	PG - 21	48.00
18 - 25	PG - 29	75.00
22 - 32	PG - 36	120.00
30 - 38	PG - 42	150.00
34 - 44	PG - 48	180.00

FLANGE TYPE CABLE GLANDS		
SUITABLE OVER ALL DIAMETER	DOWELL'S CATLOGUE NO.	PRICE EACH (Rs./Paise)
12.0 - 16.0	DOWELLS - 5	77.00
16.1 - 18.0	DOWELLS - 4	91.00
18.1 - 21.0	DOWELLS - 3	98.00
21.1 - 25.0	DOWELLS - 2	124.00
25.1 - 29.0	DOWELLS - 1	156.00
29.1 - 33.0	DOWELLS - 11	185.00
33.1 - 35.0	DOWELLS - 0	218.00
35.1 - 38.0	DOWELLS - 00	252.00
38.1 - 41.0	DOWELLS - 38	274.00
41.1 - 45.0	DOWELLS - 001	347.00
45.1 - 52.0	DOWELLS - 002	398.00
52.1 - 59.0	DOWELLS - 003	432.00
59.1 - 67.0	DOWELLS - 0033	522.00
67.1 - 76.0	DOWELLS - 004	696.00

BRASS PG GLAND		
SUITABLE OVER ALL DIAMETER	DOWELL'S CATLOGUE NO.	PRICE EACH (Rs./Paise)
2 - 5	MPG - 7	50.00
3 - 8	MPG - 9	64.00
4 - 10	MPG - 11	81.00
5 - 12	MPG - 13.5	100.00
8 - 14	MPG - 16	110.00
12 - 17	MPG - 21	165.00
16 - 25	MPG - 29	290.00
20 - 32	MPG - 36	410.00
28 - 37	MPG - 42	590.00
32 - 40	MPG - 48	850.00

### NOTE :

- Price are subjected to change without prior notice.
- Applicable G.S.T will be charge extra - This price list supersedes all our earlier price list.
- Applicable HSN Code for Brass PG gland and Flange type gland is 85389000
- Applicable HSN Code for Nylon PG gland is 85359000
- Subjected to Mumbai Jurisdiction.

## DC TYPE MEDIUM DUTY ARMoured BRASS CABLE GLANDS



SUITABLE OVER ALL DIAMETER	CATALOG NO.	Nipple (inch)	Rate Per Piece (Rs. Ps.)	Inner Packing (Nos.)
07.0 - 14.0	DC - 3/8"	5/8"	113.00	40
14.1 - 15.5	DC - 1/2"	5/8"	119.00	40
15.6 - 17.0	DC - 5/8"	3/4"	131.00	30
17.1 - 18.5	DC - 3/4"	3/4"	147.00	24
18.6 - 19.5	DC - 7/8"	3/4"	193.00	24
19.6 - 22.5	DC - 1"	1"	215.00	20
22.6 - 25.5	DC - 1.1/8"	1.1/8"	276.00	15
25.6 - 31.5	DC - 1.1/4"	1.1/4"	363.00	12
31.6 - 34.5	DC - 1.3/8"	1.1/2"	433.00	8
34.6 - 36.5	DC - 1.1/2"	1.1/2"	485.00	8
36.6 - 44.5	DC - 1.3/4"	2"	703.00	5
44.6 - 49.5	DC - 2"	2"	806.00	5
49.6 - 54.5	DC - 2.1/4"	2.1/4"	940.00	3
54.6 - 63.5	DC - 2.1/2"	2.1/2"	1293.00	2
63.6 - 69.5	DC - 2.3/4"	2.3/4"	1461.00	2
69.6 - 74.5	DC - 3"	3"	1798.00	2
74.6 - 81.0	DC - 3.1/4"	3.1/4"	2082.00	1
81.1 - 86.0	DC - 3.1/2"	3.1/2"	2717.00	1
86.1 - 100.0	DC - 4"	4"	3690.00	1

### NOTE :

- Price are subjected to change with out prior notice.
- Price list w.e.f. 02.05.2019
- Applicable Taxes, Duties will be charge extra.
- Subjected to Mumbai Jurisdiction.

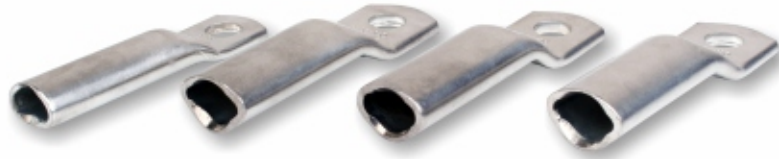


# NATIONAL PRICE LIST

(2<sup>nd</sup> May 2019)



## COPPER SECTOR LUGS - LONG BARREL



SIZE (Sq. mm)	E - BOLT HOLE	DOWELL'S CATLOGUE NO.				PRICE EACH (Rs./Paise)	STD PKG.
		2 CORE	3 CORE	3.5 CORE	4 CORE		
25	8.4	CUS-2001	CUS-3001	CUS-3501	CUS-4001	37.47	25
25	10.5	CUS-2002	CUS-3002	CUS-3502	CUS-4002	37.47	25
25	13	CUS-2003	CUS-3003	CUS-3503	CUS-4003	37.47	25
35	8.4	CUS-2004	CUS-3004	CUS-3504	CUS-4004	59.98	25
35	10.5	CUS-2005	CUS-3005	CUS-3505	CUS-4005	59.98	25
50	8.4	CUS-2006	CUS-3006	CUS-3506	CUS-4006	85.50	25
50	10.5	CUS-2007	CUS-3007	CUS-3507	CUS-4007	85.50	25
50	13	CUS-2008	CUS-3008	CUS-3508	CUS-4008	85.50	25
70	8.4	CUS-2009	CUS-3009	CUS-3509	CUS-4009	138.18	15
70	10.5	CUS-2010	CUS-3010	CUS-3510	CUS-4010	138.18	15
70	13	CUS-2011	CUS-3011	CUS-3511	CUS-4011	138.18	15
95	10.5	CUS-2012	CUS-3012	CUS-3512	CUS-4012	171.22	10
95	13	CUS-2013	CUS-3013	CUS-3513	CUS-4013	171.22	10
95	17	CUS-2014	CUS-3014	CUS-3514	CUS-4014	171.22	10
120	10.5	CUS-2015	CUS-3015	CUS-3515	CUS-4015	236.43	10
120	13	CUS-2016	CUS-3016	CUS-3516	CUS-4016	236.43	10
120	17	CUS-2017	CUS-3017	CUS-3517	CUS-4017	236.43	10
150	10.5	CUS-2018	CUS-3018	CUS-3518	CUS-4018	298.82	15
150	13	CUS-2019	CUS-3019	CUS-3519	CUS-4019	298.82	15
150	17	CUS-2020	CUS-3020	CUS-3520	CUS-4020	298.82	15
185	10.5	CUS-2021	CUS-3021	CUS-3521	CUS-4021	374.36	10
185	13	CUS-2022	CUS-3022	CUS-3522	CUS-4022	374.36	10
185	17	CUS-2023	CUS-3023	CUS-3523	CUS-4023	374.36	10
240	13	CUS-2024	CUS-3024	CUS-3524	CUS-4024	574.04	10
240	17	CUS-2025	CUS-3025	CUS-3525	CUS-4025	574.04	10
300	17	CUS-2026	CUS-3026	CUS-3526	CUS-4026	718.18	10
300	20.3	CUS-2027	CUS-3027	CUS-3527	CUS-4027	718.18	10
400	20.3	CUS-2028	CUS-3028	CUS-3528	CUS-4028	1015.84	8
500	21	CUS-2029	CUS-3029	CUS-3529	CUS-4029	1194.34	5
630	21	CUS-2030	CUS-3030	CUS-3530	CUS-4030	1792.39	5

PRICE ARE SUBJECT TO CHANGE WITHOUT NOTICE



SIZE (Sq. mm)	E - BOLT HOLE	DOWELL'S CATLOGUE NO.				PRICE EACH (Rs./Paise)	STD PKG.
		2 CORE	3 CORE	3.5 CORE	4 CORE		
25	8.4	CUS-2101	CUS-3101	CUS-3601	CUS-4101	26.95	25
25	10.5	CUS-2102	CUS-3102	CUS-3602	CUS-4102	26.95	25
25	13	CUS-2103	CUS-3103	CUS-3603	CUS-4103	26.95	25
35	8.4	CUS-2104	CUS-3104	CUS-3604	CUS-4104	40.00	25
35	10.5	CUS-2105	CUS-3105	CUS-3605	CUS-4105	40.00	25
50	8.4	CUS-2106	CUS-3106	CUS-3606	CUS-4106	61.75	25
50	10.5	CUS-2107	CUS-3107	CUS-3607	CUS-4107	61.75	25
50	13	CUS-2108	CUS-3108	CUS-3608	CUS-4108	61.75	25
70	8.4	CUS-2109	CUS-3109	CUS-3609	CUS-4109	98.26	15
70	10.5	CUS-2110	CUS-3110	CUS-3610	CUS-4110	98.26	15
70	13	CUS-2111	CUS-3111	CUS-3611	CUS-4111	98.26	15
95	10.5	CUS-2112	CUS-3112	CUS-3612	CUS-4112	120.75	10
95	13	CUS-2113	CUS-3113	CUS-3613	CUS-4113	120.75	10
95	17	CUS-2114	CUS-3114	CUS-3614	CUS-4114	120.75	10
120	10.5	CUS-2115	CUS-3115	CUS-3615	CUS-4115	180.80	10
120	13	CUS-2116	CUS-3116	CUS-3616	CUS-4116	180.80	10
120	17	CUS-2117	CUS-3117	CUS-3617	CUS-4117	180.80	10
150	10.5	CUS-2118	CUS-3118	CUS-3618	CUS-4118	226.88	15
150	13	CUS-2119	CUS-3119	CUS-3619	CUS-4119	226.88	15
150	17	CUS-2120	CUS-3120	CUS-3620	CUS-4120	226.88	15
185	10.5	CUS-2121	CUS-3121	CUS-3621	CUS-4121	292.69	10
185	13	CUS-2122	CUS-3122	CUS-3622	CUS-4122	292.69	10
185	17	CUS-2123	CUS-3123	CUS-3623	CUS-4123	292.69	10
240	13	CUS-2124	CUS-3124	CUS-3624	CUS-4124	459.23	10
240	17	CUS-2125	CUS-3125	CUS-3625	CUS-4125	459.23	10
300	17	CUS-2126	CUS-3126	CUS-3626	CUS-4126	591.12	10
300	20.3	CUS-2127	CUS-3127	CUS-3627	CUS-4127	591.12	10
400	20.3	CUS-2128	CUS-3128	CUS-3628	CUS-4128	875.97	8
500	21	CUS-2129	CUS-3129	CUS-3629	CUS-4129	1015.19	5
630	21	CUS-2130	CUS-3130	CUS-3630	CUS-4130	1523.53	5



# NATIONAL PRICE LIST

(2<sup>nd</sup> May 2019)



## COPPER SECTOR CONNECTORS



SIZE (Sq. mm)	DOWELL'S CATALOGUE NO.				PRICE EACH (Rs./Paise)	STD PKG.
	2 CORE	3 CORE	3.5 CORE	4 CORE		
25	2S-CB-25	3S-CB-25	3.5S-CB-25	4S-CB-25	18.24	50
35	2S-CB-35	3S-CB-35	3.5S-CB-35	4S-CB-35	29.19	50
50	2S-CB-50	3S-CB-50	3.5S-CB-50	4S-CB-50	46.92	50
70	2S-CB-70	3S-CB-70	3.5S-CB-70	4S-CB-70	80.27	50
95	2S-CB-95	3S-CB-95	3.5S-CB-95	4S-CB-95	118.84	25
120	2S-CB-120	3S-CB-120	3.5S-CB-120	4S-CB-120	162.62	20
150	2S-CB-150	3S-CB-150	3.5S-CB-150	4S-CB-150	218.92	25
185	2S-CB-185	3S-CB-185	3.5S-CB-185	4S-CB-185	289.28	25
240	2S-CB-240	3S-CB-240	3.5S-CB-240	4S-CB-240	450.34	20
300	2S-CB-300	3S-CB-300	3.5S-CB-300	4S-CB-300	625.48	10
400	2S-CB-400	3S-CB-400	3.5S-CB-400	4S-CB-400	959.07	8
500	2S-CB-500	3S-CB-500	3.5S-CB-500	4S-CB-500	1099.13	5
630	2S-CB-630	3S-CB-630	3.5S-CB-630	4S-CB-630	1508.01	5

## ALUMINIUM SECTOR LUGS - LONG BARREL



SIZE (Sq. mm)	E - BOLT HOLE	DOWELL'S CATLOGUE NO.				PRICE EACH (Rs./Paice)	STD PKG.
		2 CORE	3 CORE	3.5 CORE	4 CORE		
25	8.4	2S-ALS-518	3S-ALS-518	3.5S-ALS-518	4S-ALS-518	5.64	50
25	10.5	2S-ALS-519	3S-ALS-519	3.5S-ALS-519	4S-ALS-519	5.64	50
25	13	2S-ALS-520	3S-ALS-520	3.5S-ALS-520	4S-ALS-520	5.64	50
35	8.4	2S-ALS-521	3S-ALS-521	3.5S-ALS-521	4S-ALS-521	9.04	50
35	10.5	2S-ALS-522	3S-ALS-522	3.5S-ALS-522	4S-ALS-522	9.04	50
50	8.4	2S-ALS-655	3S-ALS-655	3.5S-ALS-655	4S-ALS-655	12.88	50
50	10.5	2S-ALS-512	3S-ALS-512	3.5S-ALS-512	4S-ALS-512	12.88	50
50	13	2S-ALS-524	3S-ALS-524	3.5S-ALS-524	4S-ALS-524	12.88	50
70	8.4	2S-ALS-556	3S-ALS-556	3.5S-ALS-556	4S-ALS-556	19.44	30
70	10.5	2S-ALS-525	3S-ALS-525	3.5S-ALS-525	4S-ALS-525	19.44	30
70	13	2S-ALS-526	3S-ALS-526	3.5S-ALS-526	4S-ALS-526	19.44	30
95	10.5	2S-ALS-527	3S-ALS-527	3.5S-ALS-527	4S-ALS-527	24.08	20
95	13	2S-ALS-528	3S-ALS-528	3.5S-ALS-528	4S-ALS-528	24.08	20
95	17	2S-ALS-529	3S-ALS-529	3.5S-ALS-529	4S-ALS-529	24.08	20
120	10.5	2S-ALS-557	3S-ALS-557	3.5S-ALS-557	4S-ALS-557	33.25	20
120	13	2S-ALS-530	3S-ALS-530	3.5S-ALS-530	4S-ALS-530	33.25	20
120	17	2S-ALS-531	3S-ALS-531	3.5S-ALS-531	4S-ALS-531	33.25	20
150	10.5	2S-ALS-658	3S-ALS-658	3.5S-ALS-658	4S-ALS-658	42.02	25
150	13	2S-ALS-532	3S-ALS-532	3.5S-ALS-532	4S-ALS-532	42.02	25
150	17	2S-ALS-533	3S-ALS-533	3.5S-ALS-533	4S-ALS-533	42.02	25
185	10.5	2S-ALS-511	3S-ALS-511	3.5S-ALS-511	4S-ALS-511	52.65	20
185	13	2S-ALS-534	3S-ALS-534	3.5S-ALS-534	4S-ALS-534	52.65	20
185	17	2S-ALS-535	3S-ALS-535	3.5S-ALS-535	4S-ALS-535	52.65	20
240	13	2S-ALS-536	3S-ALS-536	3.5S-ALS-536	4S-ALS-536	80.73	15
240	17	2S-ALS-537	3S-ALS-537	3.5S-ALS-537	4S-ALS-537	80.73	15
300	17	2S-ALS-500	3S-ALS-500	3.5S-ALS-500	4S-ALS-500	100.99	10
300	20.3	2S-ALS-559	3S-ALS-559	3.5S-ALS-559	4S-ALS-559	100.99	10
400	20.3	2S-ALS-560	3S-ALS-560	3.5S-ALS-560	4S-ALS-560	142.86	8
500	20.3	2S-ALS-596	3S-ALS-596	3.5S-ALS-596	4S-ALS-596	224.11	5
630	20.3	2S-ALS-561	3S-ALS-561	3.5S-ALS-561	4S-ALS-561	294.55	5



# NATIONAL PRICE LIST

(2<sup>nd</sup> May 2019)



## ALUMINIUM SECTOR LUGS - SHORT BARREL



SIZE (Sq. mm)	E - BOLT HOLE	DOWELL'S CATLOGUE NO.				PRICE EACH (Rs./Paise)	STD PKG.
		2 CORE	3 CORE	3.5 CORE	4 CORE		
25	8.4	2S-ALS-218	3S-ALS-218	3.5S-ALS-218	4S-ALS-218	4.06	50
25	10.5	2S-ALS-219	3S-ALS-219	3.5S-ALS-219	4S-ALS-219	4.06	50
25	13	2S-ALS-220	3S-ALS-220	3.5S-ALS-220	4S-ALS-220	4.06	50
35	8.4	2S-ALS-221	3S-ALS-221	3.5S-ALS-221	4S-ALS-221	6.03	50
35	10.5	2S-ALS-222	3S-ALS-222	3.5S-ALS-222	4S-ALS-222	6.03	50
50	8.4	2S-ALS-255	3S-ALS-255	3.5S-ALS-255	4S-ALS-255	9.31	50
50	10.5	2S-ALS-312	3S-ALS-312	3.5S-ALS-312	4S-ALS-312	9.31	50
50	13	2S-ALS-224	3S-ALS-224	3.5S-ALS-224	4S-ALS-224	9.31	50
70	8.4	2S-ALS-256	3S-ALS-256	3.5S-ALS-256	4S-ALS-256	13.82	30
70	10.5	2S-ALS-225	3S-ALS-225	3.5S-ALS-225	4S-ALS-225	13.82	30
70	13	2S-ALS-226	3S-ALS-226	3.5S-ALS-226	4S-ALS-226	13.82	30
95	10.5	2S-ALS-227	3S-ALS-227	3.5S-ALS-227	4S-ALS-227	16.98	20
95	13	2S-ALS-228	3S-ALS-228	3.5S-ALS-228	4S-ALS-228	16.98	20
95	17	2S-ALS-229	3S-ALS-229	3.5S-ALS-229	4S-ALS-229	16.98	20
120	10.5	2S-ALS-257	3S-ALS-257	3.5S-ALS-257	4S-ALS-257	25.42	20
120	13	2S-ALS-230	3S-ALS-230	3.5S-ALS-230	4S-ALS-230	25.42	20
120	17	2S-ALS-231	3S-ALS-231	3.5S-ALS-231	4S-ALS-231	25.42	20
150	10.5	2S-ALS-258	3S-ALS-258	3.5S-ALS-258	4S-ALS-258	31.90	25
150	13	2S-ALS-232	3S-ALS-232	3.5S-ALS-232	4S-ALS-232	31.90	25
150	17	2S-ALS-233	3S-ALS-233	3.5S-ALS-233	4S-ALS-233	31.90	25
185	10.5	2S-ALS-311	3S-ALS-311	3.5S-ALS-311	4S-ALS-311	41.16	20
185	13	2S-ALS-234	3S-ALS-234	3.5S-ALS-234	4S-ALS-234	41.16	20
185	17	2S-ALS-235	3S-ALS-235	3.5S-ALS-235	4S-ALS-235	41.16	20
240	13	2S-ALS-236	3S-ALS-236	3.5S-ALS-236	4S-ALS-236	64.58	15
240	17	2S-ALS-237	3S-ALS-237	3.5S-ALS-237	4S-ALS-237	64.58	15
300	17	2S-ALS-300	3S-ALS-300	3.5S-ALS-300	4S-ALS-300	83.13	10
300	20.3	2S-ALS-259	3S-ALS-259	3.5S-ALS-259	4S-ALS-259	83.13	10
400	20.3	2S-ALS-260	3S-ALS-260	3.5S-ALS-260	4S-ALS-260	123.19	8
500	20.3	2S-ALS-296	3S-ALS-296	3.5S-ALS-296	4S-ALS-296	185.63	5
630	20.3	2S-ALS-261	3S-ALS-261	3.5S-ALS-261	4S-ALS-261	248.71	5

PRICE ARE SUBJECT TO CHANGE WITHOUT NOTICE



SIZE (Sq. mm)	DOWELL'S CATALOGUE NO.				PRICE EACH (Rs./Paise)	STD PKG.
	2 CORE	3 CORE	3.5 CORE	4 CORE		
25	2S-ALS-1	3S-ALS-1	3.5S-ALS-1	4S-ALS-1	3.23	100
35	2S-ALS-2	3S-ALS-2	3.5S-ALS-2	4S-ALS-2	5.17	100
50	2S-ALS-3	3S-ALS-3	3.5S-ALS-3	4S-ALS-3	8.32	100
70	2S-ALS-4	3S-ALS-4	3.5S-ALS-4	4S-ALS-4	14.22	100
95	2S-ALS-5	3S-ALS-5	3.5S-ALS-5	4S-ALS-5	21.07	50
120	2S-ALS-6	3S-ALS-6	3.5S-ALS-6	4S-ALS-6	28.83	35
150	2S-ALS-7	3S-ALS-7	3.5S-ALS-7	4S-ALS-7	38.81	50
185	2S-ALS-8	3S-ALS-8	3.5S-ALS-8	4S-ALS-8	51.28	40
240	2S-ALS-9	3S-ALS-9	3.5S-ALS-9	4S-ALS-9	79.83	20
300	2S-ALS-10	3S-ALS-10	3.5S-ALS-10	4S-ALS-10	110.87	15
400	2S-ALS-11	3S-ALS-11	3.5S-ALS-11	4S-ALS-11	170.01	10
500	2S-ALS-19	3S-ALS-19	3.5S-ALS-19	4S-ALS-19	164.81	5
630	2S-ALS-20	3S-ALS-20	3.5S-ALS-20	4S-ALS-20	218.96	5



# NATIONAL PRICE LIST

(2<sup>nd</sup> May 2019)



## Smart Crimping System

**SYT - 17**  
( Non-Insulated )



Capacity : \* 1.5 mm<sup>2</sup> - 6 mm<sup>2</sup>      Rs. 6,83.00/-

**SYA - 427**



Capacity : 1.5mm<sup>2</sup> to 10mm<sup>2</sup>  
Special Features : Non-insulated terminations with inter locking, arrangement and releasing system.      Rs. 800.00/-

**SYT - 2**



Capacity : 0.5mm<sup>2</sup> to 16mm<sup>2</sup>  
Special Features : Non-Insulated terminations with inter locking arrangement and releasing system.      Rs. 9,46.00/-

**SYT - 185**  
(12 set of ring dies )



Capacity : 10mm<sup>2</sup> to 185mm<sup>2</sup>  
Special Features : Changeable ring types of dies from R1 to R13.      Rs. 6,081.00/-

**SYG - 2622 - 0.75 mm<sup>2</sup>**  
**SYG - 2216 - 1.5 mm<sup>2</sup>**  
**SYH - 1614 - 2.5 mm<sup>2</sup>**  
(Insulated/ Pre-Insulated)



Rs. 1,601.00/-

**SYT - 400**



Capacity : 25mm<sup>2</sup> to 400mm<sup>2</sup>  
Special Features : Hand operated crimping system with hexagonal dies.      Rs. 12,828.00/-

**SYI - 1210 / SYO - 1210**  
( Insulated/ Pre- Insulated )



Capacity : 4mm<sup>2</sup> - 6mm<sup>2</sup>      Rs. 2,722.00/-

**SYT - 9**  
( Dieless )



Capacity : 6mm<sup>2</sup> to 50mm<sup>2</sup>  
Special Features : Manual dieless (HEX-profile) rotating range for aluminium terminations.      Rs. 1,455.00/-

**SYB - 95 (R-1 to R-10)**  
( R-8 Die is not available )  
( 9 Set Ring Dies )



Capacity : 10mm<sup>2</sup> to 95mm<sup>2</sup>      Rs. 5,359.00/-

**SYT - 50**  
(Dieless)



Capacity : 16mm<sup>2</sup> to 50mm<sup>2</sup>  
Special Features : Hand operated crimping tool      Rs. 2,381.00/-

**SYB - 9502 (R-1 to R-13)**  
( R-8 Die is not available )  
( 12 Set Ring Dies )



Capacity : 10mm<sup>2</sup> to 185mm<sup>2</sup>      Rs. 6,916.00/-

**SYT - 7**



Capacity : 25mm<sup>2</sup> to 400mm<sup>2</sup>  
Special Features : Gearpowered Changeable Regular hex dies with interlocking releasing system      Rs. 15,942.00/-

## Smart Crimping System

**SYD - 20 A**  
( R 11 to R-16 )

Rs. 26,792.00/-

**Capacity : 10mm<sup>2</sup> to 300mm<sup>2</sup>**

**Special Features :** Hand operated hydraulic changeable ring dies forming dies, W-type, D- type, P- type, T- type, H/RH- type dies also available extra



**SYT - 102 R**  
( Foot Operated )  
( 11 set of Hex Dies )

Rs. 38,115.00/-

**Capacity : 50mm<sup>2</sup> to 630mm<sup>2</sup>**

**Special Features :** Easy carry light weight crimping modified head with foot operated hydraulic pump. flip Head ( Hexagonal Dies )



**SYD - 20 B**  
( 8 Set of Hex Dies )

Rs. 29,352.00/-

**Capacity : 50mm<sup>2</sup> to 400mm<sup>2</sup>**

**Special Features :** Hand operated hydraulic changeable hexagonal dies



**SYT - 53 M**  
( End sealing terminal )

**Capacity : 10mm<sup>2</sup> to 35mm<sup>2</sup>**

**Special Features :** For End Sealing Ferrules Insulated & Non- Insulated



Rs. 2,436.00/-

**SYD - 20 C**  
( R- 11 to R-16 )

Rs. 31,368.00/-

**Capacity : 10mm<sup>2</sup> to 300mm<sup>2</sup>**

**Special Features :** Hand operated hydraulic tool with trolley arrangement



**SYT - 6-6**  
( End sealing ferrules )

**Capacity : 0.25mm<sup>2</sup> to 6mm<sup>2</sup>**

**Special Features :** Self adjusting Crimping tools For end sealing ferrules



Rs. 2,436.00/-

**SYE - 150A**  
(R11 to R18)

Rs. 37,165.00/-

**Capacity : 10mm<sup>2</sup> to 1000mm<sup>2</sup>**

**Special Features :** Hand operated hydraulic crimping system with 8 set of ring dies



SYT - 120 - Rs. 1,238.00/- (Cutter)  
SYT - 240 - Rs. 2,474.00/- (Cutter)  
SYT - 500 - Rs. 4,954.00/- (Cutter)



**Capacity : 120mm<sup>2</sup> to 240mm<sup>2</sup> to 500mm<sup>2</sup>**

**Special Features :** Mechanical cable cutter for cutting copper & aluminium cable

**SYE - 150B**  
( 10 set of Hex Dies )

Rs. 43,724.00/-

**Capacity : 10mm<sup>2</sup> to 1000mm<sup>2</sup>**

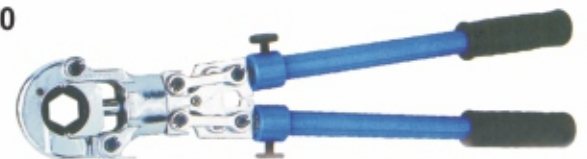
**Special Features :** Hand operated hydraulic tools 120mm<sup>2</sup> to 1000mm<sup>2</sup> cable with 10 to 95 dies shall be charges extra.



**SYM - 300**

**Capacity : 16mm<sup>2</sup> to 300mm<sup>2</sup>**

**Special Features :** Mechanical crimping tool for tubular cable lug & connector crimping hexagonal crimping with telescopical handle



Rs. 15,953.00/-

**SYE - 150C**  
( R 11 to R-16 )

Rs. 39,111.00/-

**Capacity : 10mm<sup>2</sup> to 1000mm<sup>2</sup>**

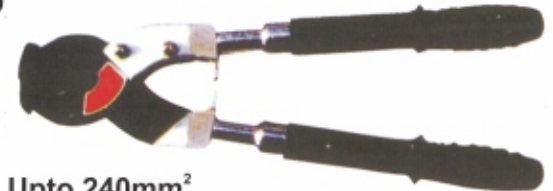
**Special Features :** Hand operated hydraulic changeable ring dies forming dies, W-type, D- type, P- type, T- type, H/RH- type dies also available extra



**SYXL - 240**

**Capacity : Upto 240mm<sup>2</sup>**

**Special Features :** Mechanical cable cutter for XLPE Cables



Rs. 6,813.00/-



# NATIONAL PRICE LIST

(2<sup>nd</sup> May 2019)



## Smart Crimping System

**SYT-107 (with hexagonal dies)**  
**(10 to 120mm<sup>2</sup>)**



**Rs. 10,380.00/-**

**Special Features :** New versatile head, light weight faster perfect crimping

**Jack SYD - 20 A (SPD - 2034)**  
**Crimping Capacity**  
**up to 300mm<sup>2</sup>**



**SYD - 20 A - Rs. 13,800.00/-**

**Prize include die set R 11 to R 16 ( Ring Type)**

**SYT-109**  
**(with hexagonal dies)**



**Capacity : 50mm<sup>2</sup> to 400mm<sup>2</sup>**

**Special Features :** Hand operated hydraulic crimping tool **Rs. 59,467.00/-**

**Jack SYD - 20 B (Portable Jack) (SPD - 2036)**  
**Crimping Capacity**  
**up to 400mm<sup>2</sup>**



**SYD - 20 B - Rs. 16,560.00/-**

**Prize include die set 50mm<sup>2</sup> to 400mm<sup>2</sup> ( Hex Type)**

**SYT-106**  
**( with hexagonal dies )**



**Capacity : 16mm<sup>2</sup> to 300mm<sup>2</sup>**

**Special Features :** Hand operated hydraulic crimping tool **Rs. 9,581.00/-**

**Jack SYT - 102 R (HY- 282) Portable Jack**  
**Crimping Capacity**  
**up to 630mm<sup>2</sup>**



**SYT - 102 R - Rs. 24,960.00/-**

**Prize include die set 50mm<sup>2</sup> to 630mm<sup>2</sup> ( Hex Type)**

**SYT-104**  
**( with hexagonal dies )**



**Capacity : 50mm<sup>2</sup> to 400mm<sup>2</sup>**

**Special Features :** Flip type head **Rs. 58,878.00/-**

**Jack SYE - 150 A (SPE-1709)**  
**Crimping Capacity**  
**up to 1000mm<sup>2</sup>**



**SYE - 150 A - Rs. 23,880.00/-**

**Prize include die set R11 to R18 ( Ring Type)**

**SYT-52M**  
**(For end sealing ferrules)**



**Capacity : 0.5mm<sup>2</sup> to 6mm<sup>2</sup>**

**Special Features :** Insulated terminations with inter locking arrangement and releasing system. **Rs. 1,791.00/-**

**Jack SYE - 150 B (Portable) (SPE - 1713)**  
**Crimping Capacity**  
**up to 1000mm<sup>2</sup>**



**SYE - 150 B - Rs. 31,440.00/-**

**Prize include die set 120mm<sup>2</sup> to 1000mm<sup>2</sup> ( Hex Type)**

**SYT-1546**  
**( Insulated )**



**Capacity : 1.5mm<sup>2</sup> to 4.6mm<sup>2</sup>**

**Special Features :** Insulated terminations with inter locking arrangement and releasing system. **Rs. 1,791.00/-**

**SYB-9502 H**  
**(RH-1 to RH-13 Hex Dies)**



**Capacity : 10mm<sup>2</sup> to 185mm<sup>2</sup>**

**Rs. 7,421.00/-**

PRICE ARE SUBJECT TO CHANGE WITHOUT NOTICE

## Smart Crimping System

**SPE- 1711**  
Hand Operated Hydraulic Pump  
(Max. Pressure 10000 P.S.I.)



Rs. 14,976.00/-

**SPE- 1712**  
Foot Operated Hydraulic Pump  
(Max. Pressure 10000 P.S.I.)



Rs. 16,560.00/-

**Jack Hose Pipe**  
Std 2meters SPE - 1607



Rs. 1,973.00/-

**SYT - 117**  
Electrically Operated Power Pack



**Capacity :**  
**Max pressure 700 Bar**  
**Special Features :** Electrically Operated Pump  
Electric Motor : 2HP  
Tank Capacity : 25 Ltr.  
Oil : Hydraulic Oil No. 68

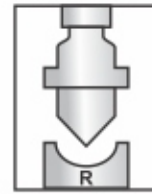
Rs. 1,45,000.00/-

**JIG FOR SYB -95/9502**  
RING DIES



R-1, R-2, R-3, R-4, R-5, R-6, R-7,  
R-9, R-10, R-11, **Rs. 295/- Each**

**JIG FOR PUNCH TYPE**  
RING DIES



R-12, R-13,  
**Rs. 361/- Each**

**CRIMPING JIG FOR**  
**SYT-185 (Plier Type)**

JR-1, JR-2, JR-3, JR-4, JR-5, JR-6  
JR-7, JR-9, JR-10, JR-11, JR-12, JR-13



**Rs. 355/- Each**

**CRIMPING JIG FOR**  
**SYT-7 (Hex Profile)**  
(Mechanical gear Power)

JRH-25, JRH-35, JRH-50, JRH-70, JRH-95  
JRH-120, JRH-150, JRH-185, JRH-240, JRH-300, JRH-400,



**Rs. 931/- Each**

**JIG FOR SYT-102 R**  
(Hex Profile)

(Foot operated Hydraulic Crimping Tool)  
JEM 267 (50mm<sup>2</sup>) JEM 272 (185mm<sup>2</sup>)  
JEM 268 (70mm<sup>2</sup>) JEM 273 (240mm<sup>2</sup>)  
JEM 269 (95mm<sup>2</sup>) JEM 274 (300mm<sup>2</sup>)  
JEM 270 (120mm<sup>2</sup>) JEM 275 (400mm<sup>2</sup>)  
JEM 271 (150mm<sup>2</sup>)



**Rs. 1,752/- Each**

**JIG FOR SYT-400**  
Hex Profile (Plier Type)

J-25, J-35, J-50, J-70, J-95, J-120,  
J-150, J-185, J-240, J-300, J-400



**Rs. 696/- Each**

**CRIMPING JIGS FOR**  
**SYD-20 A TOOL**



**SYD-20 B TOOL**

JDR-11, JDR-12, JDR-13,  
JDR-14, JDR-15,  
**Rs. 1,187/- Each**

JDA-50, JDA-150  
JDA-70 JDA-240  
JDA-95 JDA-300  
JDA-120 JDA-400

**Rs. 1,356/- Each**

JDR-16



**Rs. 2,033/- Each**

**CRIMPING JIGS FOR**  
**SYE-150 A TOOLS**



**SYE-150 B**  
**Rs. 3,730/- Each**

**ADOPTER BLOCK FOR TOOLS**  
**TO USE SYE-150, SYB-95, SYD-20**

R-4, R-5, 4-6, R-7, 4-9, R-10  
**Rs. 1,695/- Each**  
R-11, R-12, R-13, R-14,  
**Rs. 1,865/- Each**  
R-15, R-16, R-17, R-18,  
**Rs. 2,034/- Each**  
R-19, R-20, R-21, R-22,  
R-23, R-27, R-29  
**Rs. 2,458/- Each**  
JEA-10, JEA-16, JEA-25, JEA-35  
**Rs. 1,610/- Each**  
JEA-50, JEA-70, JEA-95, JEA-120,  
JEA-150 **Rs. 2,288/- Each**  
JEA-185, JEA-140, JEA-300, JEA-400  
**Rs. 3,204/- Each**  
JEA-500, JEA-600, JEA-800, JEA-1000  
**Rs. 4,339/- Each**

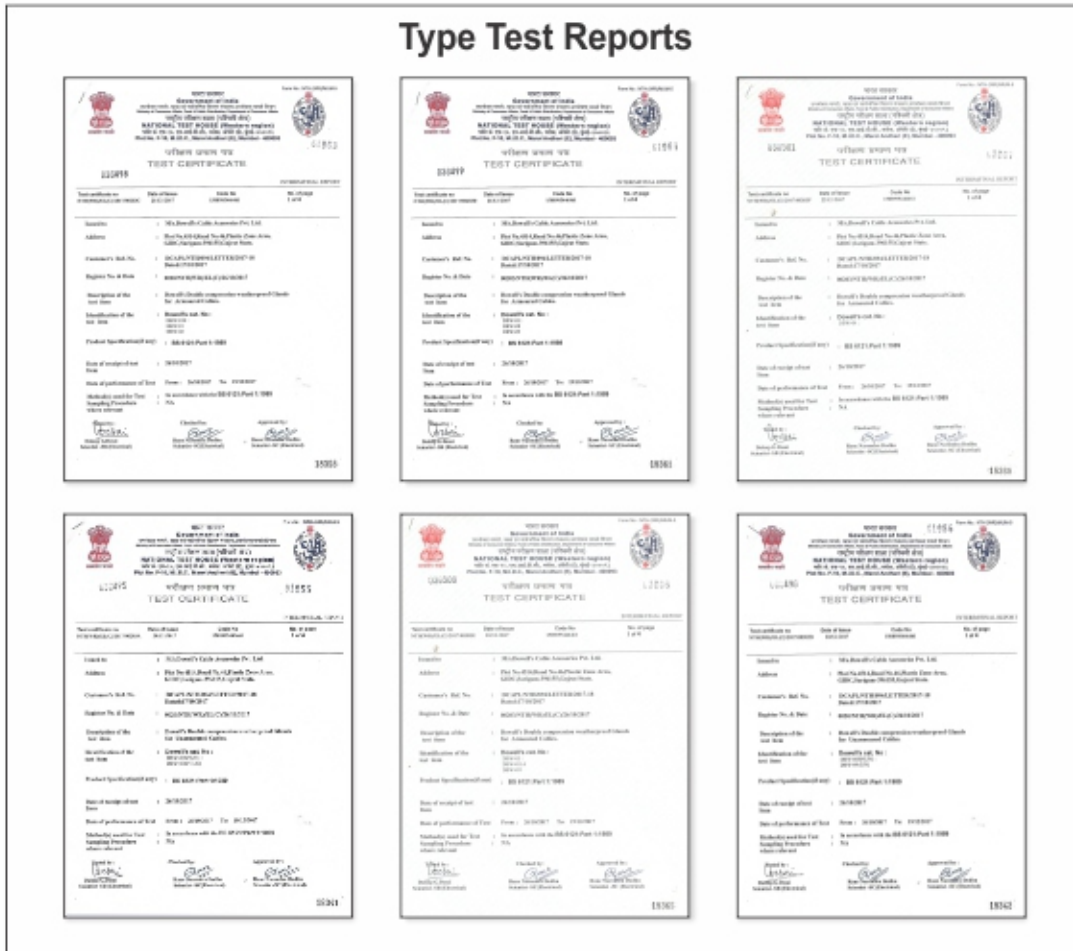


# NATIONAL PRICE LIST

(2<sup>nd</sup> May 2019)



## Type Test Reports



**NOTE:**

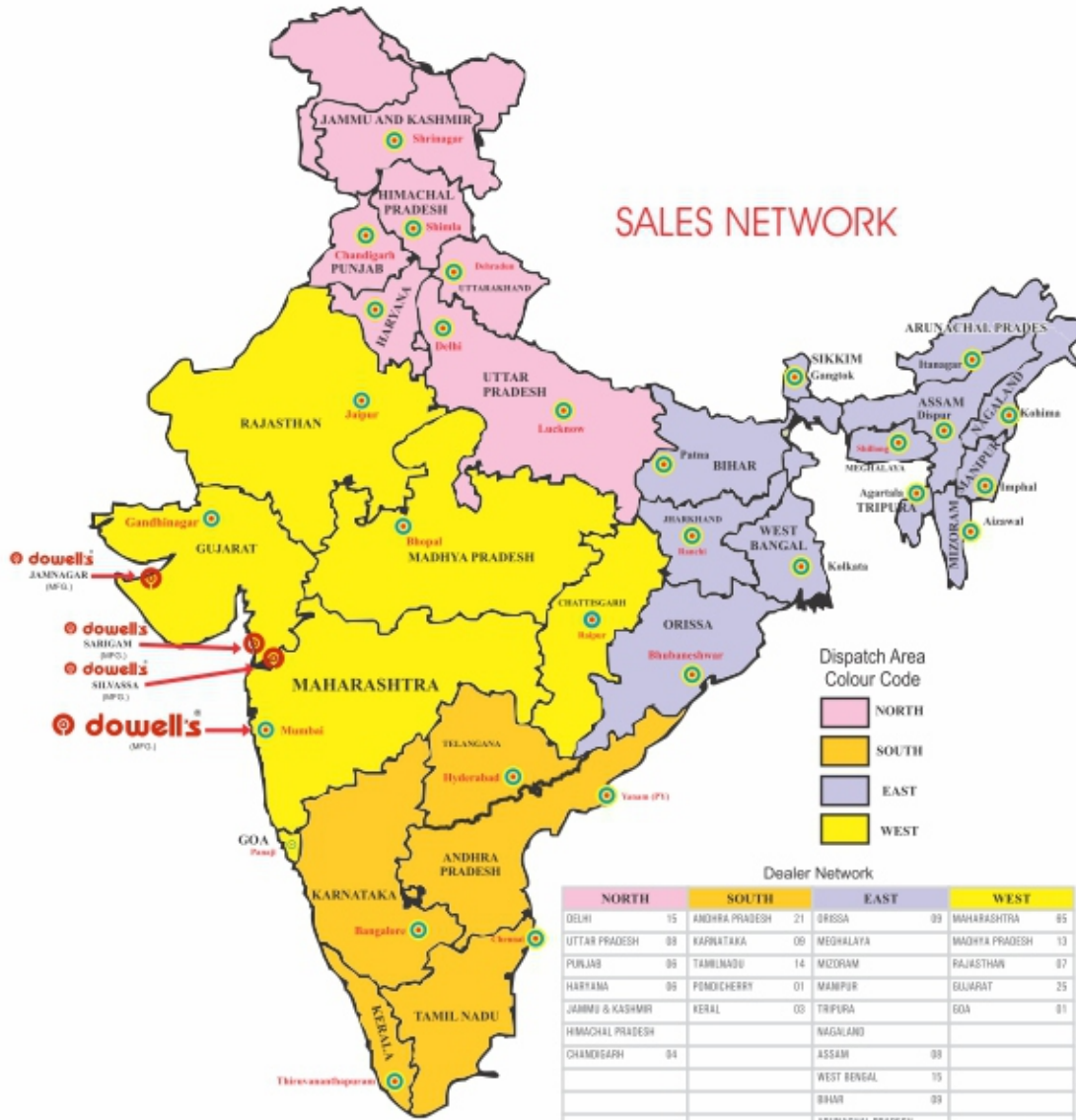
1. PRICES ARE SUBJECT TO CHANGE WITHOUT PRIOR NOTICE.
2. APPLICABLE GST WILL BE CHARGE EXTRA-THIS PRICE LIST SUPERSEDES ALL OUR EARLIER PRICE LIST
3. SUBJECT TO MUMBAI JURISDICTION

PRODUCTS	HSN CODE
COPPER AND ALUMINIUM TERMINALS & CONNECTORS	85369090
HAND TOOLS & SPARES	82032000
HYDRAULIC TOOLS & SPARES	84679900
CORROSION INHABITING COMPOUND	38119000
BRASS GLANDS / EARTH TAG	85389000
POLYIMIDE GLANDS	85359000
SHROUDS	85472000

PRICE ARE SUBJECT TO CHANGE WITHOUT NOTICE



## SALES NETWORK



TOTAL NO. OF DEALERS - 239



Corporate & Head Office :

**DOWNELL'S CABLE ACCESSORIES PVT. LTD.**

Gala No. 47/47A, Jagat Satguru Industrial Estate, Off Aarey Road, Goregaon (East), Mumbai - 400 063.

Tel. No. : 022 2927 0875 / 76 / 78

Email : dowellsgroup@gmail.com, acc1dowells@gmail.com, dowells@dowellselektro.com • Website : www.dowellselektro.com

Work Place : Unit UH - 7, Reg. Survey No. 81/P2, Shed C, Baska-Rameshara Road, Village : Vanseti,

Tal. : Halol, Dist. : Panchmahal, Gujarat - 389 350. India

Authorised Dealer